

VMware P2V Assistant

Utility for physical-to-virtual machine migration

AT A GLANCE

VMware® P2V Assistant is a customer-proven, enterprise-class migration tool that provides fast and reliable physical to virtual machine migration for a wide variety of Microsoft® Windows® operating systems. With P2V Assistant organizations can transform images of existing physical systems into VMware virtual machines without the need to re-install software or to re-configure complex application environments.

BENEFITS

- An automated solution for fast, reliable physical to virtual machine migration
- A market-proven and mature technology supported by consulting services and authorized partners
- Ease of use validated by thousands of customer deployments
- Full compatibility with VMware's best-in-class virtualization products
- Support for a wide range of Windows® platforms, from Windows NT 4 to Windows Server 2003

How Does VMware P2V Assistant Work?

P2V Assistant performs the substitutions needed to transform an image of a physical system into a virtual machine. P2V Assistant's easy-to-use GUI wizard takes users through the following steps:

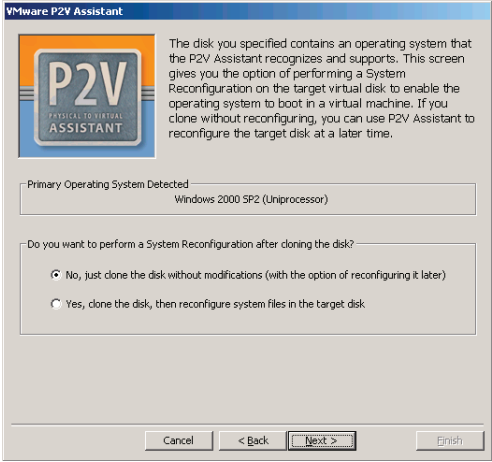
- Creating an image of the physical machine by using built-in imaging or images from supported 3rd party imaging tools
- Performing all necessary disk controller and driver substitutions so the virtual machine can be booted
- Recommending any additional configuration modifications needed to complete the physical to virtual transformation

How Is VMware P2V Assistant Used in the Enterprise

VMware P2V Assistant helps organizations to take advantage of the flexibility, cost savings, and streamlined management that VMware virtualization brings.

Using P2V Assistant enables customers to rapidly realize the benefits of solutions that leverage the capabilities of VMware virtualization:

- **Server consolidation:** With VMware P2V Assistant existing systems can be transformed into virtual machines that can be easily consolidated onto fewer physical servers. Through consolidation organizations have reduced costs associated with hardware, operations, and datacenter infrastructure.
- **Efficient testing and debugging:** VMware P2V Assistant can capture images of production systems into virtual machines that can be used for testing and troubleshooting in a consolidated "sandbox" environment. Enterprises can minimize disruptions to production servers by troubleshooting problems and testing changes in this exact replica of the production environment.
- **Backup and disaster recovery:** With VMware P2V Assistant users can take images of production systems and convert them into virtual machines that can be activated in the event of a disaster to minimize service disruption.
- **Simplify migration to newer hardware:** P2V Assistant creates hardware-independent virtual machines, making it possible to migrate legacy applications to new hardware without requiring rebuilding, porting, or reconfiguration.



The VMware P2V Assistant GUI guides users through the migration of a physical system to a virtual machine.

KEY FEATURES

• Ease of Use

- » Wizard-based interface for ease of use
- » Simple conversion process that migrates existing applications complete with configurations and data across heterogeneous hardware and Windows systems
- » Ability to proactively readjust disk sizes, types and partitions to maximize utilization of storage resources
- » Automated post-conversion virtual machine configuration tips
- » Ability to initiate the P2V process from a backup or system clone to minimize system downtime
- » Support for use of built-in or third party imaging technologies to create a virtual machine clone of a physical system

• Support for a variety of Windows systems

- » Support for Windows platforms including Windows NT, Windows 2000, Windows 2003, and Windows XP
- » Support for SMP systems

• Support for a wide range of VMware platforms

- » ESX Server™ 2.x and 3.x
- » GSX Server™ 3.x
- » VMware Server™ 1.x
- » VMware Workstation 4.5 and 5.x

Product Specifications and System Requirements

For detailed product specifications and system requirements, go to http://www.vmware.com/support/pubs/p2v_pubs.html.

"Without VMware, migrating our applications would have taken months to years because we'd have to rewrite everything. With VMware, it took only hours, and our systems and configurations were preserved as-is. The P2V Assistant really makes life so much easier."

Suraj Dalal

Senior Systems Engineer, Guardian Life

VMware, Inc. 3145 Porter Drive Palo Alto CA 94304 USA Tel 650-475-5000 Fax 650-475-5001

© 2006 VMware, Inc. All rights reserved. Protected by one or more of U.S. Patent Nos. 6,397,242, 6,496,847, 6,704,925, 6,711,672, 6,725,289, 6,735,601, 6,785,886, 6,789,156, 6,795,966, 6,880,022, 6,961,941, 6,961,806, 6,944,699, 7,069,413, 7,082,598 and 7,089,377; patents pending. VMware, the VMware "boxes" logo and design, Virtual SMP and VMotion are registered trademarks or trademarks of VMware, Inc. in the United States and/or other jurisdictions. All other marks and names mentioned herein may be trademarks of their respective companies. Item No: Q406_VM_P2V_DS_EN

